

BA No.: 02.07.147/2017-01



REBOTEC

REBOTEC® Rehabilitationsmittel GmbH
PO Box Q541
Queen Victoria Building
NSW 1230

rebotec.com.au
info@rebotec.com.au



User Instructions

Electric Tilt & Lift Shower Chair

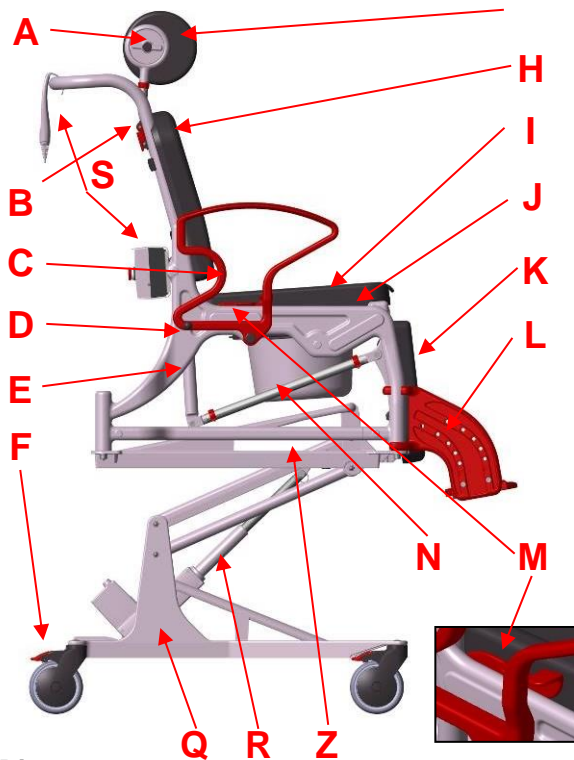
<p>Phoenix Multi Seat with hygiene opening 352.xx.10</p>
<p>Serial Number</p>

<p>Phoenix Multi Enclosed seat 352.xx.40</p>
<p>Serial Number</p>



Important!

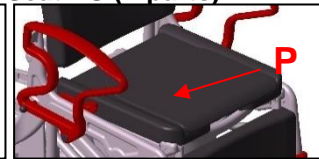
- Read the User Instructions before using the chair the first time and keep it at hand for the user.
- Keep the User Instructions booklet at hand for future use and subsequent sales.
- The user instructions and the maintenance manual are downloadable on our homepage.

Product description


Dia 1

Seat - PS


Dia. 2

Seat PU (2-parts)


Dia. 3

Chair diagram shows:

A	Rotation adjustment for PUR headrest
B	Backrest
C	Armrest (foldable)
D	Latching pins for armrest
E	Chair frame with incline adjustment
F	Castors with locking brakes
G	PUR headrest (replaceable)
H	PUR back upholstery (removable)
I	PUR seat upholstery (removable)
J	PUR seat, care opening, pan holder
K	PUR leg rest (removable)
L	Foot support with footrest (adjustable)
M	Locking lever for inclination setting
N	Toilet pan with lid (removable)
O	PUR transport seat (removable) (Dia. 2)
P	PUR seat, care opening with pad (Dia. 3)
Q	Lifting unit for seat height adjustment
R	Linear actuator
S	Control unit with hand switch
Z	Product nameplate

Table of contents

1.	General advisories	3
1.1	Introduction	3
1.2	Note LINAK mounting instructions	3
1.3	Intended proper use	3
1.4	Symbols used	3
1.5	Use and storage	3
1.6	Equipment	3
2.	Warranty	4
3.	Nameplate, ordering spare parts	4
4.	Re-use, product lifetime	4
5.	Disposal	4
6.	Safety advisories for use	4
7.	Product specifications	5
7.1	Delivery scope	5
7.2	Technical specifications	5
8.	Spare parts, accessories	6
9.	Setting up the chair for use	6
9.1	Position of the footrests	7
9.2	Adjusting the foot plate height	7
9.3	Installing, adjusting the headrest	7
9.4	Setting the inclination	7
9.5	Setting the headrest angle	8
9.6	Adjusting the seat height	8
9.7	Installing/removing the safety belt	8
10.	Electronic components	8
10.1	Battery	8
10.2	External battery charger	9
10.3	Control unit	10
10.4	EMERGENCY STOP function	10
10.5	Hand switch	10
10.6	Linear drive	11
11.	Using the chair	11
11.1	Sitting down	11
11.2	Standing up	11
11.3	Sitting and laying / low position	12
11.4	Sitting and laying while lifting	12
11.5	Using the castor locking brakes	12
11.6	Removing the seat pad	12
11.7	Folding away the footrests	12
11.8	Swiveling away the armrests	12
11.9	Removing the footrests	13
11.10	Using the commode pan	13
12.	Troubleshooting	13
13.	Care	13
14.	Maintenance and upkeep	14
14.1	Maintaining the chair	14
14.2	Maintaining electronic components	14
14.3	Upkeep	14

Packaging



Keep the packaging for later transport. This will allow proper packaging in the event of a return shipment.

1. General advisories

1.1 Introduction

In this User Instructions booklet you will find information and advisories for start-up, use, operation, maintenance and care of the Phoenix PU-E and PS-E wheelchairs.

Carefully read the User Instructions before using the product. Abide by the safety instructions and act accordingly.

1.2 Note LINAK-mounting instructions

The assembly instructions for the electronic drive unit of LINAK GmbH are also applicable. The assembly instructions can be downloaded from www.linak.de. This also makes it possible to print out the information and read it if necessary.

The names listed in the table lead to the corresponding documents via the search function of the website.

Rebotec Description	LINAK Description
Linear actuator	Actuator LA31
Hand switch	Hand switch HB30
Battery	Battery module BAJ1
Control unit	Power supply CBJ2
External battery charger	External battery charger CHJ2

1.3 Intended proper use

- The wheelchair is for household and out-patient purposes. It is to be used exclusively for assistance when going to the toilet, showering (only with the seat cushion with hygiene opening: model PU-E) or when transferring a person indoors.
- Rolling over a toilet is **not** possible!
- The shower cabin should be constructed so that it is possible to travel into it with a wheelchair. The wheelchair is not suitable for extended periods of sitting and for long patient transfer distances.
- Persons with limited perception and senses, joint damage in the arms, and inabilities to sit may not use this wheelchair.
- **Maximum user weight is ca. 150kg (330.69lbs).**

1.4 Symbols used

	Read the instructions!		Year of Manufacture
	Product complies to the Medical Products Directive 93/42/EEC		
	Caution! Read the safety advisories		
	Attention! Advisory		<i>Important Information!</i>
	Care advisory		Maintenance advisory
	Danger of hand injury		Stepping on surface forbidden
	Caution! Abide to max. user weight or load limit 150kg (330.69 lbs).	IPX5 IPX6	Types of protection See point 13

1.5 Use and storage

- The product's temperature range for use must be between **+41°F and +104°F**. Store the product in a dry room with a relative humidity of **30-50%**. The product may be used outside of these ranges, but only for a short period of time.
- Avoid heat sources impacting the product for longer time periods (see safety advisory: "Caution: danger of injury").
- The chairs may not be used in swimming pools or sauna areas because the surface may change colors, and limitations with respect to mechanical stability may result.

1.6 Equipment

- The chairs are made of a plastic frame, a lifting frame made of aluminium mounted on four 5-inch swivel castors equipped with locking brakes. The armrests can be swiveled and have a latching mechanism.
- The footrests are height-adjustable and may be removed or folded away. The headrests are height-adjustable and can be rotated.
- The chair's inclination adjustment for the patient's back position is done by a lever unit.
- With the electric lifting unit, the patient can be lifted approx. 400mm (15.748").
- Depending on the equipment, a PUR pad is included for transport purposes or a PUR pad with hygiene opening (including commode pan).



- Because of the product's design and purpose, disassembly for transport and storing has not been planned and is not necessary.

2. Warranty

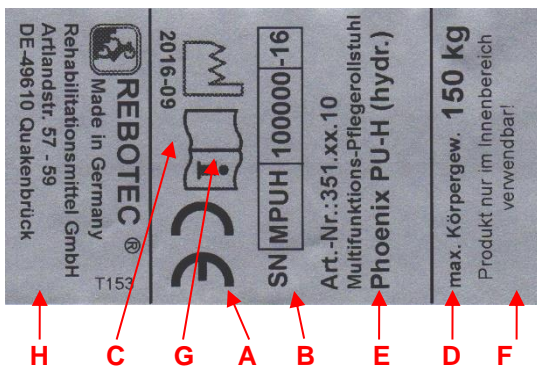
We grant a **warranty of 2 years** on the product. The warranty is valid as long as the product is used in accordance to the operational requirements and within the general terms and conditions stated in this manual.

Unauthorized modifications done to the product without the manufacturer's permission automatically leads to nullification of the warranty on the product.

- i** *The delivery date written on the REBOTEC-delivery note applies as the valid start date of the warranty period.*

3. Nameplate, ordering spare parts

The nameplate contains the following information:



A	Symbol of conformity
B	Product serial number
C	Year of manufacture (month-year)
D	Load capability (max. body weight 330.69 lbs)
E	Product name
F	Advisory (on use)
G	Read the instruction manual
H	Manufacturer info (address)

The nameplate is important for identifying the product and thus must not be removed.

- i** *To avoid faulty spare parts orders and for the purpose of processing complaints, the product's name, serial number (SN) and year of manufacture are needed.*

4. Re-use, product lifetime

- The product is designed for re-use. The re-use (lifetime) depends on the product's frequency of use and the manner of use.
- Before re-use, the product must be hygienically prepared. The technical and functional safety of

the product must be checked and, if necessary, re-established.

- **The expected lifetime of the wheelchair can be up to 5 years.**
- The effective lifetime, however, depends on the frequency of use, intensity of use, and its general condition.

5. Disposal

Disposal and recycling of used products as well as the packaging material must be done according to the applicable rules and legal regulations. Please contact your local disposal company or environmental authorities for further information. Further information can also be obtained from the assembly instructions of LINAK. See point 1.2

6. Safety advisories for use



Abide by the following safety advisories when using the chair:

Danger of slipping!

- Before use, check to be sure the seat is firmly mounted onto the seat frame.
- Before using the chair, be sure to first lock the castors in order to prevent the chair from rolling away.
- When sitting down, do not sit on the front seat edge or on the pad, instead sit on the entire seat surface.

Danger of tipping over!

- The chair may be used when sitting, rolling, and in the inclined and/or elevated position only when the armrests are latched.
- The chair may be pushed only using the push bow (backrest).
- The footrests must be swiveled away or folded up before the patient sits down or gets up. User must never attempt to stand on the footrests!
- The chair must not bump into door sills, thresholds or surface protrusions.
- Use the chair **only** indoors, on solid, even and non-slippery surfaces.
- Walk **only** at a modest speed when pushing the chair (with or without the patient).
- Users must not lean out of the chair (when the chair is still or in motion). If the swivel castors are swiveled inwards, the stability of the chair is decreased.
- Use care when moving the chair (without user) in the inclined position and/or when it is at its maximum height!
- **Passenger transport may only be carried out in the retracted position (initial position) of the chair.**

Danger of pinching!

- To prevent body parts, etc. from being pinched, never reach into the hinge area when folding the



armrests up or down. **See section 11.8, page 12 for more information.**

- To prevent body parts or objects from getting pinched, do not reach between the seat and the frame when pressing the pad into the seat frame or adjusting the inclination.
- Be sure other parts do not get jammed when folding and unfolding the footrests.
- When adjusting the headrest, be sure that no body parts or objects get pinched.
- There's a risk of pinching soft flesh when pulling out and pushing in the commode pan. To avoid injury, the commode pan may be pulled out or pushed in only when no one is sitting on the chair.

Danger of tipping!

- **When standing up, sitting and moving with the chair, do so only when both armrests are latched in position.**
- Sitting, standing up, moving, or laying in the chair (when chair is in the inclined position) by the patient, and lifting (height adjustment with lifting unit) of the patient, are to be done only with the help of a trained attendant. This depends on the health condition of the patient.
- Before and during the placement of the patient on the chair, the patient should firmly hold on to the armrests.
- Use by patients who tend to have uncontrolled movement and handling ability must not be done without supervision.
- Travelling on an inclined surface or ramp may be done **only** with the help of an attendant. In general an upward grade may be travelled on while moving forwards, and a downward grade while moving the chair backwards.

Danger of breakage!

- The chair is suited **only** for the intended purpose. Abide by the maximum allowable body weight (specified on the nameplate)!

Danger of injury through temperature!

- There is a risk of injury at a surface temperature over 104°F. Therefore never keep the chair near a strong heat source (direct sunlight. Do not store the chair near a heat source such as a heater, or clean it with hot water). **Allow the surface of the chair to first cool off before use.**

I *When the chair is to be used by patients with insensitive skin (persons who cannot feel temperature rises and / or have skin damage), an attendant must first check the chair for heat (feel with the palm of the hand). **Observe Section 1.5***

Safety advisory – lifting unit

Danger of pinching/crushing!

- When raising or lowering the chair height, observe the warning advisories (stickers in the area of the lifting unit). The lifting unit in part comprises parts that move with respect to each other and thus present a danger of pinching or crushing when not

properly operated or used. Therefore keep hands and feet away from these parts, and do not reach into the lifting unit during raising and lowering the chair.

Warning! Danger of injury!

- Be sure that no third party or object is in the area of hazard when the lifting unit is raised or lowered.
- Before using the chair and the lifting unit, the chair must be on a solid and stable surface.
- Observe the maximum allowable patient body weight, as the chair is designed only for this max. load.
- **Also observe the safety instructions in the assembly instructions of LINAK GmbH (see point 1.2)**

7. Product specifications

7.1 Delivery scope

The product was checked for freedom of defects and for completeness at the factory. After receiving the product, check it for any damage that may have occurred during transport and for completeness.

- 1 wheelchair PU-E or PS-E
- 1 headrest unit
- 1 safety belt (Art. No.: 322.30.10)
- 1 changeover battery
- 1 external battery charger
- 1 User Instructions

7.2. Technical specifications

For the purpose of continuous development, we reserve the right to make modifications with respect to the chair depicted in the User Instructions booklet.

Dimension(ca.)		PU-E*	PS-E*
A	1-total height	1225mm (48.23")	1225mm (48.23")
	2-total height	1180mm (46.46")	1180mm (46.46")
	3-push bow height	1065mm (41.93")	1065mm (41.93")
B	Total width	680mm (26.77")	680mm (26.77")
C	1-total depth	1165mm (45.87")	1165mm (45.87")
	2-total depth	1435mm (56.50")	1435mm (56.50")
D	Seat height	600mm (23.62")	590mm (23.23")
E	Seat width	450mm (17.72")	450mm (17.72")
	Width between armrests	540mm (21.26")	540mm (21.26")



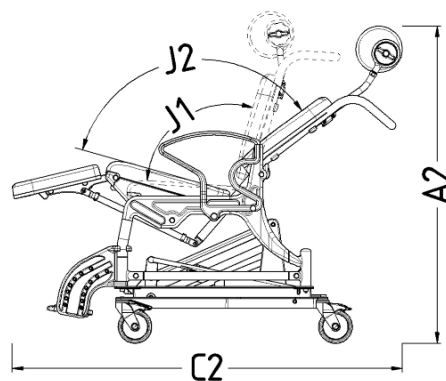
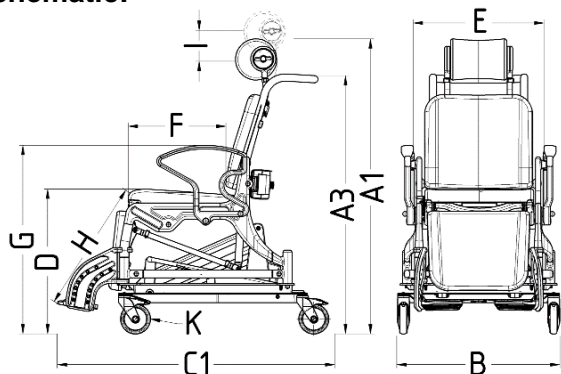
Dimension(ca.)		PU-E*	PS-E*
F	Seat depth	440mm (17.32")	430mm (16.93")
G	Armrest height	785mm (30.91")	785mm (30.91")
H	Footrest height	440-520mm (17.32-20.47")	430-510mm (16.93-20.08")
I	Height extension of head rest	120mm (4.72")	120mm (4.72")
J	1-seat angle	103°	103°
	2-laying angle	128°	128°
K	Castors Ø	125mm (5")	125mm (5")
	Lift height	ca. 400mm (15.75")	ca. 400mm (15.75")
Lifting unit		stepless	
Duty cycle		2min. operation, 18min. pause	
Turn radius		1250mm (49.21")	1250mm (49.21")
Body weight		max. 150kg (330.69 lbs)	max. 150kg (330.69 lbs)
Chair weight		53,6kg (118.20lbs)	53,0kg (116.85lbs)
Lifting cycles		App.45 / battery charge	
Linear actuator		IPX6	
Battery		IPX5	
Hand switch		IPX6	
Control unit		IPX5	
Ext. battery charger		IPX5	
Safety		Safety protection class I Emergency stop function	
Power supply		External battery charger 100-240V AC	
Skin compatibility		As to DIN EN 10993-5	
Inflammability		As to DIN EN 1021-2 **	

* Dimensions for model w/ head rest roller, Design 1

**Flame-retardant: article made of PUR material

Production dimensional tolerances: +/- 5 mm (0.2")

Schematic:



8. Spare parts, accessories

Article No.	name
440.10.62	PUR seat pad *
440.10.04	PUR care seat with care opening*
309.10	Pan holder, black*
440.10.24	PUR care seat w/o care opening*
450.10.16	PUR back upholstery
450.10.17	PUR leg pad
450.00.18	PUR headrest roll, Form 1
301.xx	Commode pan with lid*
02.07.146	User Instructions Phoenix-E
02.11.151	Maintenance Instructions
322.30.20	Safety belt (size: M/L)
322.10.50	Upholstery for safety belt
422.00.80	Linear actuator
422.00.84	Hand switch
422.00.86	Battery, 2x
422.00.82	Control unit
422.00.89	External battery charger
accessories	
450.00.19	PUR headrest roll, Form 2
440.10.32	PUR armrest cushion (1 pc.)
440.10.40	PUR spray protection (1 pc)
322.30.10	Leg belt (size S)
322.30.99	Set: safety belt and upholstery

* Depends on the equipment variant, PU or PS

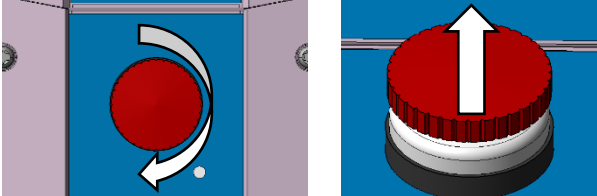
9. Setting up the wheelchair for use

The product is delivered completely assembled in a carton. Before using the first time, the wheelchair first must be checked over for transport damage. Settings and adjustments may be done **only** by a qualified specialist. Before using the batteries for the first time, they must be charged for 24 hours to ensure proper operation and lifetime.

**Caution!**

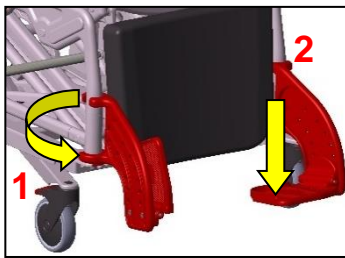
All cables must be routed in such a way, preventing people from stumbling, and causing injury during use. It is important to remove the plastic foil from the cables before use.

The **emergency-stop button** may have to be deactivated before operating. Turn the knob clockwise (arrow direction) until it is unlocked.

**9.1 Position of the footrests**

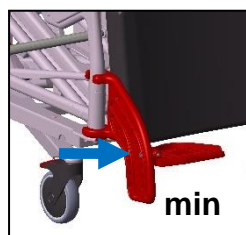
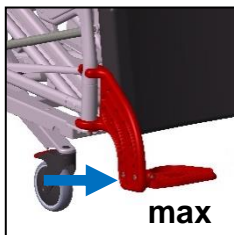
Rotate the footrests (1) all the way to the front until they latch in position. Next unfold the foot plates (2).

The foot plates may need to be height adjusted.

**9.2 Adjusting the foot plate height**

The foot plates are height-adjustable to four positions. Remove the screws from the side at the footrests using an SW 5 Allen key. Select the appropriate level (1-4) and once again tighten the screws at the foot plates.

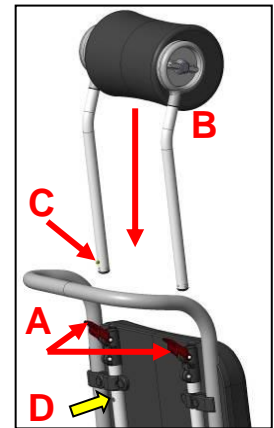
Be sure that the screws are firm!

**9.3 Installing, adjusting the headrest**
Installation:

Flip the levers (A) upwards and insert the tubes of the headrest unit into the openings.

Push the tubes down until the push-buttons (C) click in the holes (D).

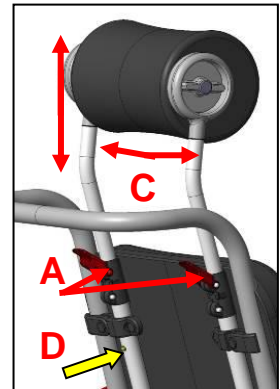
Next push the button (C) all the way in and push the tube to the end and press the levers (A) all the way down.

**Setting the height and depth:**

To set the headrest height, flip both levers (A) upwards and push the head rest to the appropriate height.

The head rest can be steplessly adjusted (ca. 120mm / 4.72") until the button (D) clicks into the hole (end-position).

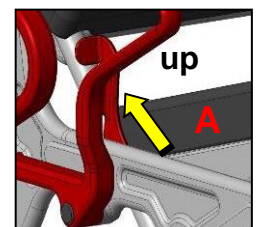
After setting, press both levers (A) down again. By removing the clips (C), the headrests can be removed for cleaning or for replacing.

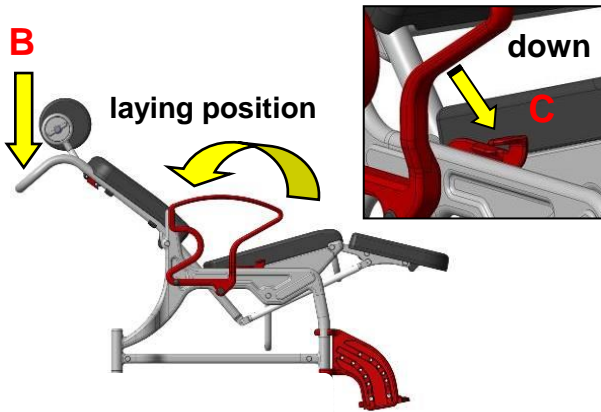
**9.4 Setting the inclination**

The backrest may be steplessly inclined back up to approx. 37°. Here the seat inclines up to 12°. Next pull the locking levers (A) vertically upward and push the backrest (B) downward until the desired position is reached. Next press the locking levers (C) all the way down.



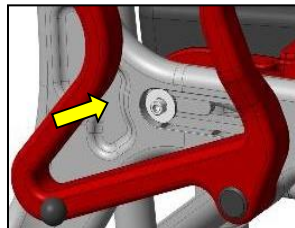
When adjusting the backrest inclination, be sure that no body parts or objects get pinched and that the armrests are latched in position!





Maintenance advisories

If the function of the locking lever becomes difficult or too easy, then the clamping effect can be regulated by an adjustment maneuver.



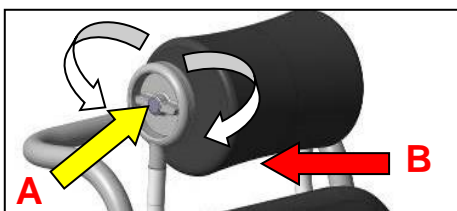
Remove the cap. Using an SW 5 Allen key, the clamping force is increased by rotating to the right, or reduced by rotating to the left. After adjusting, check the lever function for ease of motion.

Finally press the cap back on and latch the armrest back into position.

9.5 Setting the headrest angle

By rotating knob (A), the headrest angle can be adjusted.

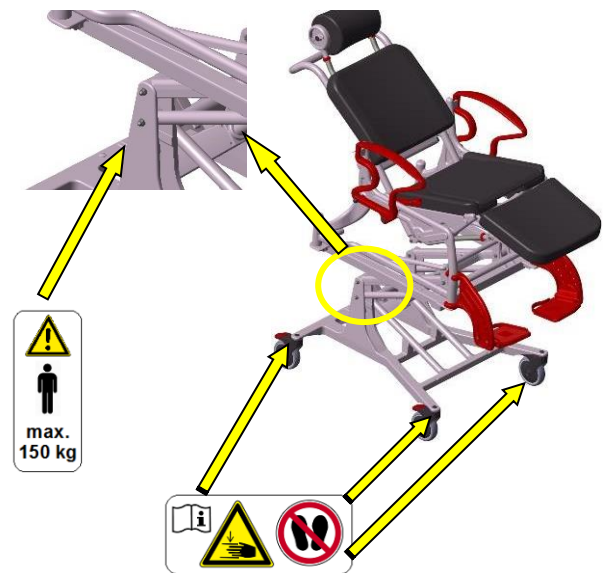
Warning! Danger of pinching (B) between the headrest and backrest!



9.6 Adjusting the seat height

The chair's seat height is stepless adjustable via the electric unit. The patient can be lifted a maximum of 400mm (15.75").

Adhere to the warning signs!



9.7 Installing/removing the safety belt

The safety belt is already installed when the chair is delivered. To remove it, fold away the armrests, as described in Section 11.8 on page 12, and pull the loops down from the armrest locking mechanism. When re-installing, be sure the safety belt is not twisted.

10. Electronic components

Observe safety instructions

- Check whether the connection cable or the plug is damaged. Do not use damaged cables or plugs!
- **Observe the main connection voltage (100-240V / 50Hz) and appropriate main fuse for the charger.**
- The control unit and the battery unit must never be opened.
- **Do not operate the chair during the charging process!**

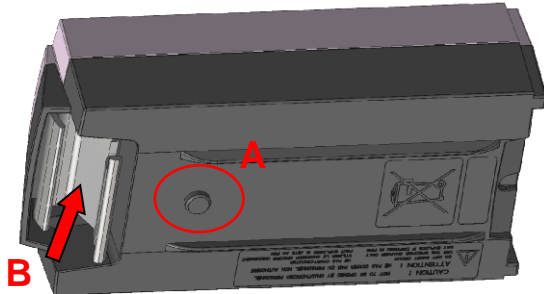
10.1 Battery

Two batteries are included. They are already pre-loaded. Before using the batteries, they must be charged for 24 hours in the external charger. If the lifting / lowering process of the chair slows down noticeably, the battery capacity is too low.

Charge the discharged battery as soon as possible! This increases the battery life. Longer time unused batteries should be recharged every 3 months to avoid deep discharges, as this will damage the battery. For information on durability, see 14.2.

**Attention!**

Periodically check that the ventilation hole (A) is working properly. Due to the construction of the ventilation line, batteries can leak, but water can not penetrate.







The battery is removable for charging or replacement. For this purpose the batteries are equipped with a snap closure (B).

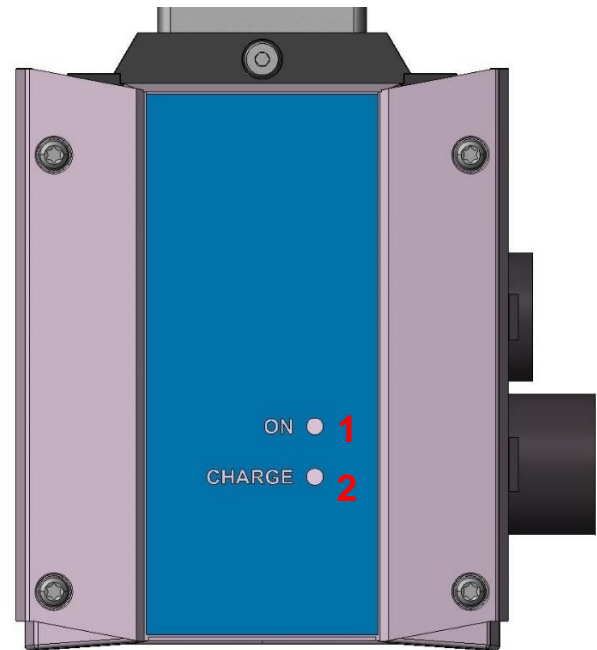
Make sure that the snap lock is engaged before you release the battery.

10.2 External battery charger

The included external charger is equipped with two LEDs. These indicate the charge state and the power supply.

Display

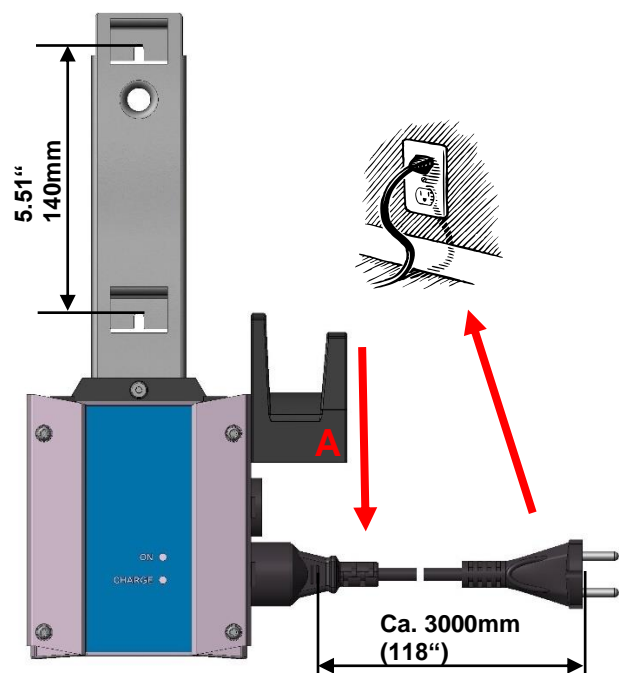
-  **LED 1 "ON"- not illuminated:**
The mains cable is not plugged into the socket. No power supply.
-  **LED 1 "ON"- green:**
If the LED "green" lights up, the wall charger is ready for operation.
-  **LED 2 "CHARGE" not illuminated:**
No battery in the charger or the battery is fully charged.
-  **LED 2 "CHARGE"- orange:**
If the LED "orange" lights up, the external charger charges the battery.

**Mounting external charger**

The wall charger is attached vertically to the 2 grooves in the mounting plate of the charger. The drilling distance is 140mm (5.51"). Make sure you choose the right screw connection according to the wall constitution.

Ensure that no cables lying in the wall are damaged during assembly. REBOTEC shall not be liable for any damage resulting from the attachment of the charger. Make sure that the length of the main cable (approx. 118") is sufficient.

i The weight of the external charger and battery is about 4kg (8.82lbs)





i The external charger has a power of 1.3 watts in idle mode (without charging a battery). To save power, unplug the power cord after each charging operation.

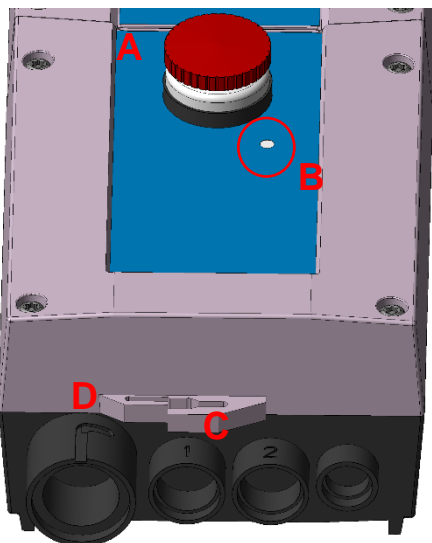
After installing the charger, slide the cap (A) over the cable. The external charger is now ready for use.

The charging process can take up to **4 hours** depending on the charge state of the batteries. The duration of the charging process depends on the main supply voltage. If the charging process takes longer than 6 hours (at 230V main connection), the battery or the wall charger is defective.

10.3 Control unit

The control unit is equipped with an emergency stop function (A) and an electrical emergency lowering. In case of emergency, the system can be switched off the emergency stop and the linear drive can be retracted without a hand switch. To use the emergency lowering, use a stylus (for example a ballpoint pen) to press the button in area B.

i In order to ensure the protection class (IPX5 & IPX6), all electrical components must be installed with each other and none of the connections (C) must be open.

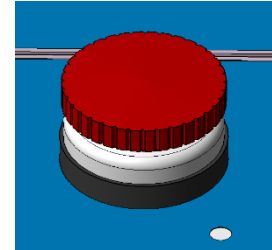


When connecting the manual switch, make sure that the female connector D (groove and arrangement of the contacts) is closed so as to avoid a defect on the control unit.

10.4 EMERGENCY STOP function

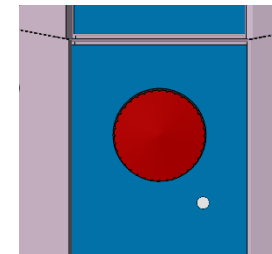
Pressing the **red EMERGENCY STOP button** locks the motor. The drive is interrupted and can no longer be controlled with the hand switch. Please use in emergency situations and if the proper operation of the chair is disturbed.

Stop



By turning the **emergency stop** head clockwise, it jumps out and is unlocked. The drive can be controlled again via the hand switch.

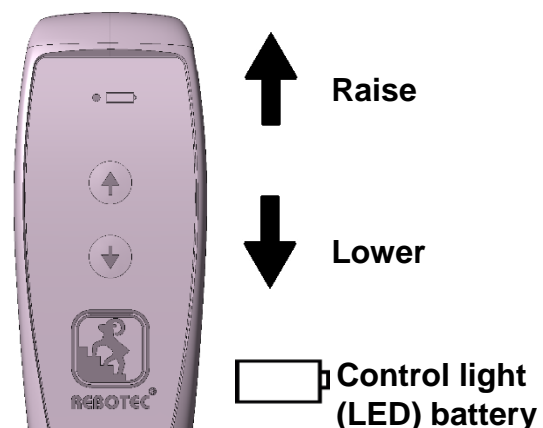
Start



10.5 Hand switch

The drive is activated with the hand switch (infinitely variable adjustment) and causes a "lifting" and "lowering" of the chair.

The switch must be pressed during the respective operation. When the switch is released, the drive stops. When the upper or lower end position is reached, the system stops automatically.



The control light (LED) on the top of the hand switch provides information on the charge status of the batteries.

Display



LED-off:

Battery capacity sufficient.



LED-orange:

If the LED "orange" lights up when the handset is actuated, the battery capacity is too low.

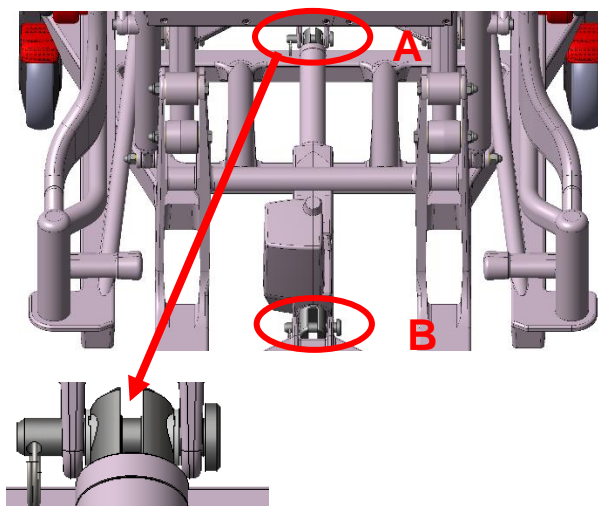
Battery must be charged soon!

Signal tone

In addition to the indicator light on the hand switch, a beep sounds when the battery capacity is too low.

10.6 Linear drive

The linear drive generates a sound level of 48 dB in the no-load condition. It is connected to the frame at two points (A & B) with bolt and key ring.



Further information on the electrical system can be found in the assembly manual of LINAK. See point 1.2

11. Using the chair



Clean the chair before first-time use!

It must be ensured that the chair is in a proper and safe condition before use.

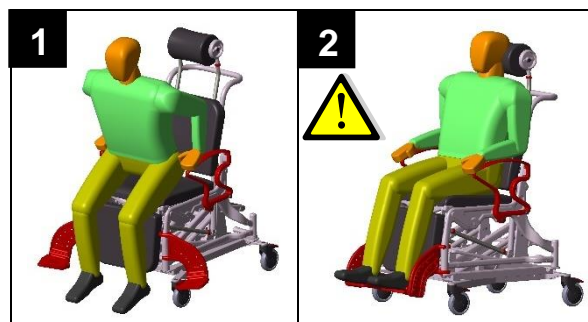


If necessary, depending on the patient's limitations (adequate mobility and muscle strength), sitting down and standing up may be done only with the assistance of an attendant. Subsequent adjustments may be carried out only by a specialist!

11.1 Sitting down

Before sitting down it must be assured that the chair is stable and secured against slipping away and unfolding. At least 2 castors must be locked and

both armrests must be securely latched in position. Also the seat must be properly in place and the foot plates must be moved to the side or folded up.



1- The patient must be positioned as near to the chair as possible. By firmly holding on to the armrests, the patient must then slowly sit down onto the seat. If this is not possible due to physical limitations, then the patient must be assisted by an attendant.

In the event support cannot be sufficiently provided, then it is necessary to use lift equipment, or a patient lifter.

2- **Danger of falling!**

Dropping onto the chair seat must be avoided. The patient must sit as much as possible over the entire seat surface, and not only on the seat edge. When transporting a person, the surface of the seat and the backrest must be used as much as possible.

11.2 Standing up

Before standing up, it must be certain that the chair is stable and secured against slipping away or tipping over. At least two wheels must be locked, **both armrests** must be latched in position, the footrests swiveled to the side or folded up, and the patient must be sitting vertically (inclination setting and the chair at the lowest position).

The patient must move forward on the seat surface until the feet are flat on the floor.



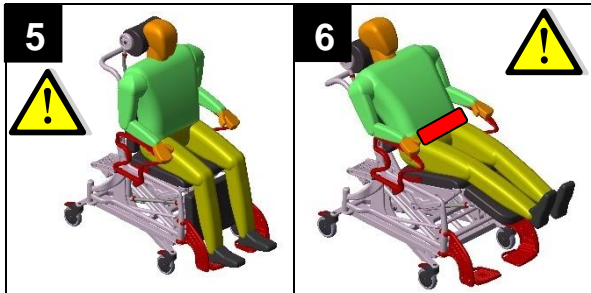
3 - By supporting him/herself firmly on the armrests, the patient must then slowly get up from the chair. The patient must not lean too far forward in order to avoid the risk of falling down.

The patient should seek the assistance of an attendant whenever standing up.

4- **Danger of falling!**

When sitting down or standing up (leaving the chair), the patient must never stand on the footrests!

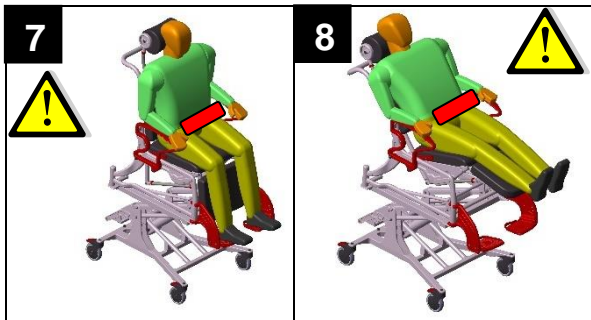
11.3 Sitting and laying / low position



Safety belt (322.30.10)

5&6 When changing the inclination angle, the safety belt first must be used (see Section 9.7 on page 8). At least two castor brakes must be engaged (locked) beforehand (Section 11.5, Schematic 1).

11.4 Sitting and laying while lifting



7&8 Should the patient be lifted by the lift mechanism, at least two castor brakes must first be engaged (Section 11.5, Schematic 1). The safety belt must be fastened while the patient is sitting and laying in order to improve the safety. Be sure that the clamping lever for the inclination setting is locked before the lifting begins.

Danger of tipping over!

- The inclination must not be extended when the chair is completely elevated as there is a danger of tipping over.
- The patient must not remain unattended in the chair at any time.
- **It is not permissible to drive the chair in the lifted position, with the patient, for safety reasons! Make sure that the chair is in the lower position before you release the brakes.**

11.5 Using the castor locking brakes



1-Press the lever of the castor brake downward with your foot (1). The wheel is now braked and the castor locked against swiveling.

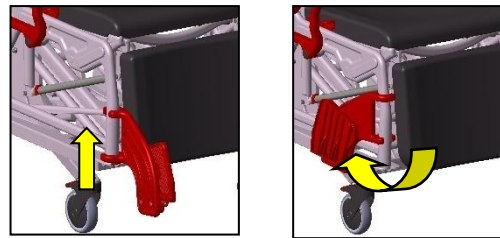
2-The wheel and castor are released by pressing the lever upwards with your foot (2).

11.6 Removing the seat pad

The seat with (I) and without (O) hygiene opening, the leg pad (K) and the backrest upholstery (H) can be removed from their mountings in the chair frame for cleaning purposes or for replacing (see description on page 2).

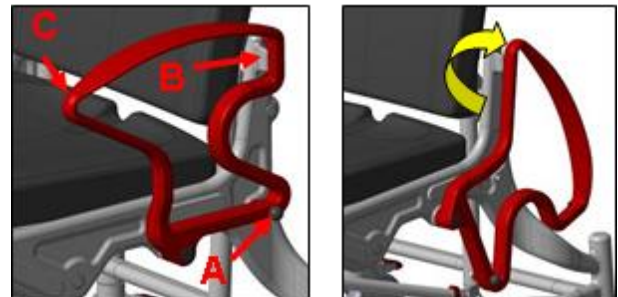
11.7 Folding away the footrests

Flip the foot plates upwards and then lift the footrests from the locking mechanism. The footrests may now be folded back.



11.8 Swiveling away the armrests

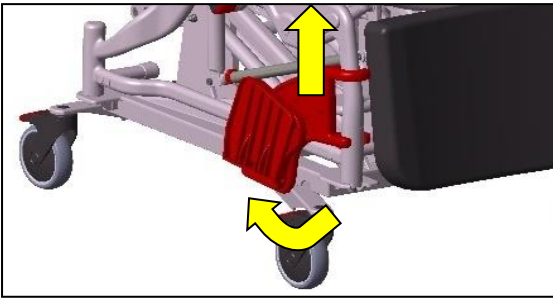
By pulling out the latching pins (A) the locking effect is disengaged and the armrests may be swiveled back. Whenever swiveling the armrests back, check to be sure that they are fully and properly latched in the mounting mechanism of the backrest (B) and that the latching pins (A) are engaged. Swiveling the armrests is done with both hands. Keep the locking pins (A) pulled out during the entire swivel action, and move the armrest at point C with the other hand. While doing so, touch only the outside surfaces and do not grab into the armrest or through it.



Check the latching mechanism on a regular basis because possible caking up of calcium deposits at the latching area can adversely effect its function and its ability to move properly.

11.9 Removing the footrests

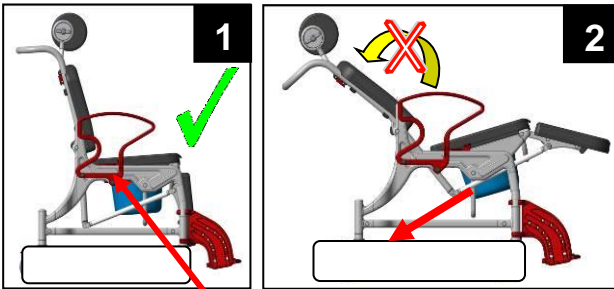
Lift the footrests approx. 100mm (3.94") and rotate them outward 90°. Now you are able to push the footrests all the way up and to pull them out.



11.10 Using the commode pan

When using the chair (PU) with a commode pan, it must be used only in the sitting position (1) and not in the laying position (2) because the commode pan will slide out!

Abide by the advisory sticker on the chair's side frame near the armrest.

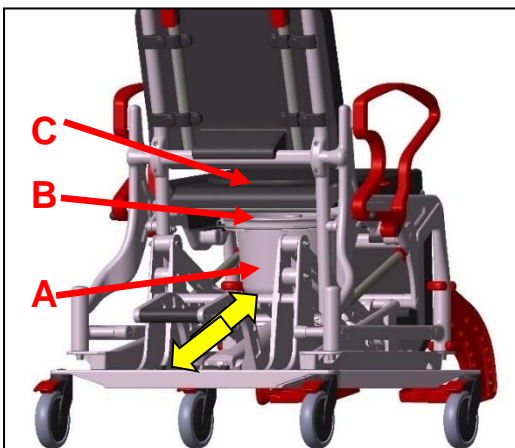


Attention! Remove the commode pan before inclining the chair to the back!

How to use

Push in the commode pan (A) from the behind the chair, by first removing the lid (B) under the seat. To remove, lift the commode pan slightly and then pull it out.

The armrests must be latched in position in order to prevent the patient from falling off. After removing the commode pan, the seat pad (C) must be put back on the shower seat.



12. Troubleshooting

Chair malfunctions/faults

Fault	Possible cause	Remedy
Armrests cannot be swiveled out	Caking up in the latching (latching pins)	Clean, check regularly
Latching pins cannot be pulled out	Caking up, spring is jammed or defective	Clean, replace the pins
Foot plate cannot be swiveled	Caking in joint, jammed	Clean, check screws
Castor brakes do not work	Generally defective	See maintenance!
Castor wheels turn with difficulty	Caked, gummed up	Clean
Castor wheels do not turn	Generally defective	See maintenance!
Wheels wobble	Uneven profile wear	See maintenance!
Chair frame unstable	Screws are loose	Tighten screws for castors, frame
Castor is bent	Crashed against obstacle	See maintenance!
Inclination adjustment lever has no function	Jammed, breakage, caking, screws are too loose or tight.	Check, maintenance
Inclination adjustment has no function	Function defective	Check, maintenance
Headrest adjustment has no function	Function defective	Check, maintenance

Malfunctions/faults – drive unit


Please refer to the assembly instructions for LINAK GmbH for information on faults and troubleshooting. See point 1.2.

13. Care


- The chair must not be cleaned with a steam cleaner or cleaning machine.
- Connecting cables must be plugged in during cleaning in order to prevent the ingress of water.
- Unused inputs are sealed with a plug, which must not be removed.
- Make sure that the plugs and cables are not bent during cleaning.
- In general the wheelchair can be cleaned using a mild conventional cleaning and disinfecting agent. Next simply wipe the chair with clean water and cloth, and then wipe dry with a clean cloth.



- Do not use an abrasive scouring agent or cleaner (read the product instructions!) that contain aggressive solvents (acids, benzene, thinners, alcohol).
- Do not use stiff cleaning objects (e.g. brushes), as these will damage the plastic surfaces or cause deposits to build up on the plastic parts and other materials.


 **Attention! Before any cleaning, press the emergency stop switch.**

Protection class	Cleaning instructions
IPX5	Washable with water and brush but without running water or immersion bath.
IPX6	Washable with water and brush. Water can be used with pressure. The system must not be exposed directly to the high-pressure cleaner jet. Max 20°C (68° F).

 *Keep the product clean, and clean it on a regular basis. Hygiene must be monitored carefully, especially in sensitive areas. In order to ensure the protection class (IPX5 & IPX6), all electrical components must be installed with each other and none of the connections (C) must be open.*

14. Maintenance and upkeep

The cause of accidents or damage may be traced back to a late detection of wear and/or improper use, as well as irregular maintenance and upkeep.

 For safety reasons and for preventing accidents, the chair must undergo a **complete maintenance at least once a year** (refer to the Medical Products Act and local requirements).

14.1 Maintaining the chair

Regular safety-technical checks are necessary:

- The product for visible damage (cracks, fractures, loose parts, instability).
- All screwed connections for tightness (especially the castor wheels and frame).
- Function of the armrests and latching pins.
- Function of the footrests (replace defective foot plates).
- Rolling ability, check function of the wheels (replace defective wheels).
- Function of the castor locking brakes (replace defective brakes).
- Function of the headrest.
- Function of the chair inclination.
- Check accessories for inadequacies.


- In the event of any inadequacies, do not put the product to use and do not carry out any repairs on your own.

Contact an authorized dealership or **REBOTEC**.

14.2 Maintenance electronic components


Regular safety checks are required:

- Check the wiring
- Check the charge level before each commissioning
- Regularly check the ventilation openings in the batteries.
- Charge the battery modules regularly.
- The batteries have a lifetime of 4 years depending on the intensity of use and the general handling.
- In the case of inconsistencies, do not operate the unit and do not perform repairs on your own. Please contact your dealer or **REBOTEC**.

 **Warning: There is a danger of injury from slipping and pinching!**

14.3 Upkeep

- If you have questions concerning maintenance and repairs to the chair, then contact an authorized dealer or medical equipment supply outlet.
- In the event of damage and/or needed repairs, contact the authorized dealership without delay.
- Never make any unauthorized modifications or conversions to the chair or the electric system. These will adversely affect the safety and function of the chair.
- When making repairs, use only original spare parts from **REBOTEC** and LINAK. Observe all advisories concerning guarantee and warranty.
- Once a complete maintenance or repair of the chair is done, carry out a complete cleaning for assuring hygiene. Follow the cleaning instructions.
- Follow the instructions for spare parts ordering, re-use, and lifetime.

 For documenting maintenance and repairs, **REBOTEC** offers a maintenance protocol. You may order User Instructions and maintenance protocol forms, or view them at www.rebotec.com.au





Notes:

We also supply

Walking aids

Shoulder crutches

Shower stools

Shower and commode chairs

Multifunction-Wheel Chairs Rollators

Patient lifting hoists Standing up aids

Your **REBOTEC** Team